



ON TRACK



A publication for and about our valued Michigan customers • www.CEConTrack.com • Spring 2026

KOMATSU

Curtis Excavating Inc.

Two-generation family business serves the earthwork needs of a wide range of customers in Northeast Michigan





**Mark Kelso,
General Manager**

**Preview new
solutions**



Dear valued customer,

North America's largest construction trade show — CONEXPO-CON/AGG — just took place in Las Vegas, where more than 2,000 exhibitors showcased the newest equipment and technology across every major construction segment. At this triennial event, Komatsu launched and previewed a broad lineup of machines, engines and digital solutions designed to improve productivity, automation and jobsite connectivity. Check out the recap in this issue to learn about CONEXPO-CON/AGG as well as Komatsu's featured products, including a new HM460-6 articulated truck and a range of Smart Construction solutions.

We also offer an insight into Komatsu's recently introduced PC365LC-11 multifunction plus excavator. Built to deliver more power exactly where it's needed, the machine combines a fully electric swing system, advanced hydraulics and a refined operator environment to help contractors complete jobs faster while significantly reducing fuel consumption and operating costs.

Additionally, there are many more valuable articles I think you will enjoy, including a customer success story, a glimpse of Komatsu's Demo Days and industry insights, such as Komatsu's partnership with Pronto.

As always, if there is anything we can do for you, please feel free to contact us.

Sincerely,
Continental Equipment Corporation

A handwritten signature in black ink that reads 'Mark Kelso'. The signature is fluid and cursive.

Mark Kelso,
General Manager

ON TRACK



A publication for and about our valued Michigan customers • www.CECONTrack.com

In this issue

Surpassing 65 years in business pg. 4

Discover how Curtis Excavating Inc. has continued to serve the earthwork needs of a wide range of customers in Northeast Michigan through two generations.

Next-generation jobsites at CONEXPO-CON/AGG pg. 8

Get a recap of CONEXPO-CON/AGG 2026.

Industry rebalances around growth markets pg. 12

Understand the construction outlook for 2026.

Wide spectrum of tasks with versatile mill pg. 14

Take a look at the WIRTGEN W 210 XF large milling machine.

Double duty with a single roller pg. 17

View the new HAMM HC 250i C VC compactor.

Engineered for multifunction applications pg. 19

Check out the Komatsu PC365LC-11 multifunction plus excavator.

Demo Days pg. 22

Explore Komatsu's Fall Demo Days 2025.

Cutting-edge technology for quarry operations pg. 27

Read about the partnership between Komatsu and Pronto.

Higher overall mark pg. 28

See ASCE's 2025 Report Card for America's Infrastructure.

Cost-effective way to maintain productivity pg. 30

Find out the benefits of Komatsu Reman components.



Published for Continental Equipment Corporation.
© 2026 Construction Publications Inc. Printed in the USA.

**THE PRODUCTS PLUS
THE PEOPLE TO SERVE YOU!**

LANSING

3600 N. Grand River Ave.
Lansing, MI 48906
(517) 321-8000
Fax: (517) 321-4191

PARTS/SERVICE LOCATIONS

GRAND RAPIDS

600 AIS Drive S.W.
Grand Rapids, MI 49548
(616) 538-2400
Fax: (616) 538-0449

NORTHEAST DETROIT

65809 Gratiot Ave.
Lenox, MI 48050
(586) 727-7502
Fax: (586) 727-7311

SAGINAW

4600 AIS Drive
Bridgeport, MI 48722
(989) 777-0090
Fax: (989) 777-1583

TRAVERSE CITY

8300 M-72 East
Williamsburg, MI 49690
(231) 267-5060
Fax: (231) 267-5257

WEST DETROIT

56555 Pontiac Trail
New Hudson, MI 48165
(248) 437-8121
Fax: (248) 437-5911

CECEQ.COM

KOMATSU

Surpassing 65 years in business

Through two generations, Curtis Excavating Inc. has continued to serve the earthwork needs of a wide range of customers in Northeast Michigan

Curtis Excavating Inc.'s story begins on the back roads of Northeast Michigan, where a farmer-turned-entrepreneur saw opportunity in a growing need for excavation work. What started as a modest operation in 1960 under the leadership of founder John Curtis has evolved into a steady community-rooted business serving Rogers City and the surrounding area. Today, the company stands as a testament to small-town resilience and generational craftsmanship.

"Dad went into the Navy and broke his leg, which led to an honorable discharge and a return home," shared John's son, Todd, who took over Curtis Excavating in the early 1990s after working alongside his father for several years. "He was one of 11 kids, and the farm was only

so big, so he went out on his own. He and Mom started a gas station, and then the excavation business followed. I'm sure he got some experience moving dirt on the farm."

Todd continued, "Dad started out with a single-axle truck, a backhoe, a trailer and a dozer. From there, he built the business by treating people the way he wanted to be treated, giving them quality work. I've always tried to make sure we maintain that ideal and keep our good name and reputation."

General excavation and topsoil sales

Today, Curtis Excavating specializes in residential excavation, municipal water and sewer work, site preparation, septic installation, topsoil production, and full-package site development. The company's material supply yard next to its office in Rogers City and its 68-acre gravel pit where it produces sand to landscape stone for uses on its own projects round out an operation designed to serve a wide range of community needs.

"We do everything from clearing lots to digging foundations to seeding lawns, including grading the site, putting down base for the pavers and installing septic systems where necessary," Todd explained. "We consider ourselves a full-service excavation contractor. Each job is approached individually, but for the most part, they are full-package projects. That's how we maintain quality and efficiency from start to finish. Staying with that philosophy has kept us pretty steady over the years and gained a lot of repeat business."

Todd added, "Relatively recently, we acquired access to and began selling high-end topsoil, which is a commodity that's been tough to come by around here."

Despite its growth in capabilities and reputation, Todd has intentionally kept the business itself small, employing only five people — including himself and his wife, Lori, who manages the office. Additional employees include Andy Curtis, Bob Greene and Brett Rachuba. Former employees who are now retired include Ralph Karsten and Keith Quade. Curtis Excavating stays busy with 10 to 20 jobs going at any one time, almost exclusively in Presque Isle County, with an estimated 80% of the work being residential while the rest includes municipal and other markets.

Customer snapshot

Company: Curtis Excavating Inc.

Location: Rogers City, Michigan

Established: 1960

Employees: 5

Areas of expertise: General earthwork and excavation; material supply; topsoil

Komatsu equipment: PC138USLC, PC200LC and PC220LC excavators; D37EX-24 and D39PX-24 dozers; WA320, WA450-3 and WA480-8 wheel loaders

Lori and Todd Curtis operate Curtis Excavating Inc., which provides full-service earthwork in Rogers City, Mich.





▶ VIDEO

Curtis Excavating owner Todd Curtis covers a new septic system on a residential site with a Komatsu D37EX-24 dozer.

Right mix of equipment

According to Todd, demands have risen and timelines have tightened over the years, so Curtis Excavating relies on its well-matched fleet to keep work efficient and precise. Each machine has a purpose, and the team uses them strategically to meet varied needs.

"We have a Komatsu PC138 tight tail swing excavator, a PC200 excavator, and a PC220 long-reach excavator, and each one fits a specific job," noted Todd. "Every project needs the right tool to make it work. You simply can't get into certain spots without the right size machine."

At residential sites, crews use the compact PC138USLC and the mid-sized PC200LC to dig foundations, replace septic systems and complete tight-access work. Curtis Excavating relies on the PC220LC long-reach excavator for municipal water and sewer projects, which allows operators to work safely from a distance while still reaching deep trench lines.

Curtis Excavating utilizes Komatsu D37EX-24 and D39PX-24 dozers to handle stripping, bulk dozing, pad construction and finish grading across its small- to medium-scale developments. It uses add-on GPS grade control to ensure a combination of accuracy with increased productivity and efficiency compared to traditional means of putting sites to grade.

"The dozers with grade-control systems have changed how we work," stated Todd.



Curtis Excavating operator Andy Curtis moves dirt with a Komatsu PC138USLC tight tail swing excavator.

"They take one person out of the process and make the finish product more consistent. The job quality is exceptional. It's easier, quicker and less expensive in the long run. We really like the slant-nose design of the Komatsu dozers because we can easily see the blade edges. They allow us to both move a sizable amount of dirt and fine grade with one machine that can easily be moved from one site to another quickly."

Curtis Excavating's Komatsu wheel loaders also play a major role, especially the pre-owned WA480-8 it recently bought and the WA320, which are used to move sand and gravel at a



Discover more at
CECOTrack.com

Continued...

'Denny has been great at finding us the right machines'

... continued

pace that keeps projects and the supply yard running smoothly. Its long-serving WA450-3 wheel loader is stationed at the pit to support constant material production and stockyard operations. These machines allow the company to maintain reliable supply while serving both project sites and local customers.

"The 480 is important because I have a lot of topsoil to move in a hurry," commented Todd. "The right loader makes all the difference when you're trying to stay ahead of demand, and we believed that the 480 was really what we needed.

By the numbers

- 66 years in business
- 2 generations
- 68-acre gravel pit
- 10 to 20 ongoing projects
- 80% of work is residential



AIS/CEC Sales Consultant Denny Gill (left) talks with Curtis Excavating owner Todd Curtis on a jobsite.

It just made sense to upgrade when the 450 started aging, although we continue to use it. We mainly use the 320 on water and sewer main projects to backfill and move pipe."

Curtis Excavating's Komatsu equipment has been acquired over the years with the help of longtime AIS/Continental Equipment Corp. Sales Consultant Denny Gill.

"Denny and AIS/CEC have been instrumental in keeping me up and running," Todd emphasized. "Denny has been great at finding us the right machines, including rentals as needed, like the Komatsu D51 intelligent dozer we used on a project. That's really what got us into GPS. In terms of service, we're pretty self-sufficient, but if we need something, they respond right away. That's important because we can't afford downtime."

Maintaining the status quo

For a company built on dependable work and long-term service to its community, Curtis Excavating sees its future much like its past: steady, local and focused on doing the job right.

After more than 30 years at the helm, Todd continues to guide the business with the same practical approach his father established 66 years ago. With a small, experienced crew and a loyal customer base, the company plans to maintain its workload, invest in reliable equipment and keep serving Northeast Michigan at a consistent pace.

"I don't see us expanding, but I see us keeping up the status quo," concluded Todd. "I've had a lot of people ask me if I have an exit strategy. I don't at this point. When they throw the last shovel full of dirt in my face, I guess I'll be done." ■

**The opinions expressed here are based on the customer's specific experience. Results may vary.*

Operator Bob Greene loads a Curtis Excavating dump truck with a Komatsu WA480-8 wheel loader at the company's supply yard in Rogers City, Mich.



Open the door to more CEC services!

Whether you're on the go, working at your office or relaxing at home, CEC can help you find what you need to keep you up and running!

Our mobile-friendly website is your doorway to:

- A large selection of new equipment
- Hundreds of pre-owned and Komatsu-certified machines, with detailed descriptions and photos
- Rentals
- Parts
- Maintenance
- Painting services
- And more!



The screenshot shows the CEC website interface. At the top left is a hamburger menu icon. To its right is the CEC logo, which includes the text 'CEC' in a stylized font, 'CONTINENTAL EQUIPMENT' in a smaller font below it, and 'Corp' in a script font at the bottom. The main content area has a dark background with the text 'YES WE CAN' in yellow, 'WE KNOW KOMATSU' in large white letters, and a paragraph of white text below. At the bottom of the screenshot is a yellow button with the text 'Purchase Pre-owned Komatsu Equipment'.

Visit www.CECeq.com today, and unlock what CEC has to offer!



Next-generation jobsites at CONEXPO-CON/AGG

Technology and automation led the conversations as 140,000-plus attendees met at North America's largest construction trade show

The global construction industry gathered in force in Las Vegas as CONEXPO-CON/AGG 2026 brought more than 140,000 professionals from 128 countries together to explore the technologies, equipment and ideas shaping the future. Held at the Las Vegas Convention Center and nearby festival grounds, the triennial event once again served as North America's largest construction trade show and a central marketplace for a \$2.2 trillion U.S. industry.

Spanning more than 3 million square feet of exhibit space and featuring more than 2,000 exhibitors, the event showcased equipment, digital technologies and services across every major construction segment. Massive earthmoving machines, cranes and paving systems stood alongside connected jobsite platforms, automation solutions and sustainability-focused innovations. Contractors, manufacturers and technology leaders gathered to evaluate equipment, forge partnerships, and conduct business that will influence projects and infrastructure development going forward.

"CONEXPO-CON/AGG is where the construction industry comes to see what's next," said CONEXPO-CON/AGG Show Director Dana Wuesthoff. "This week demonstrated the resilience and ingenuity of our industry.

From advanced machinery to digital tools that help crews work safer and smarter, the innovations unveiled here will shape jobsites for years to come."

Komatsu showcases solutions

Komatsu launched and previewed a broad lineup of machines, engines and digital solutions designed to improve productivity, automation and jobsite connectivity.

"CONEXPO-CON/AGG is where the construction industry comes to see what's next."

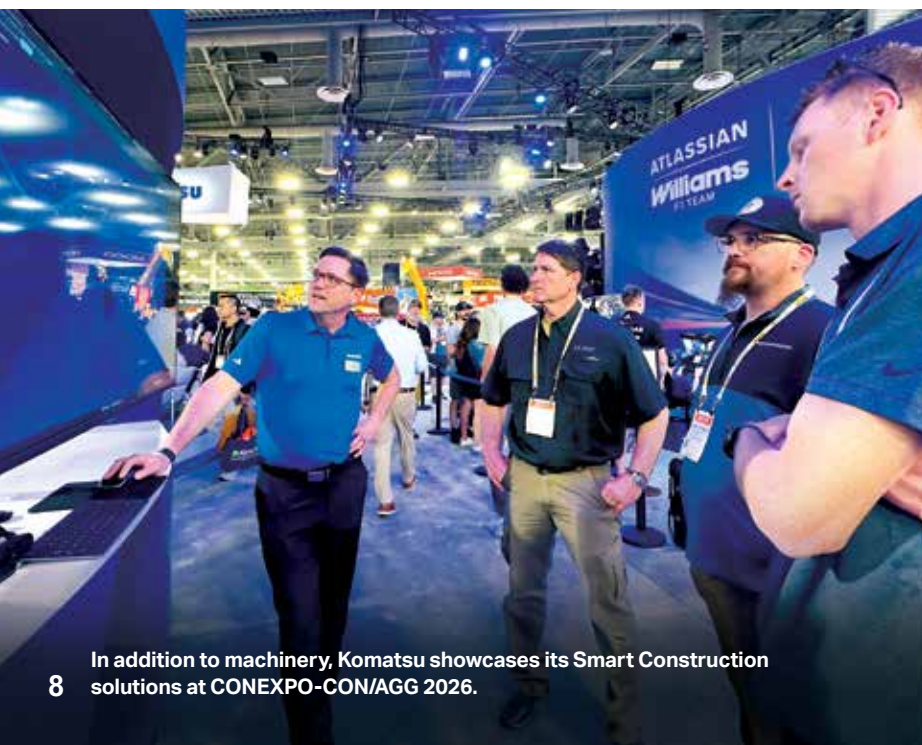
*- Dana Wuesthoff,
Show Director,
CONEXPO-CON/AGG*

"At CONEXPO, our goal is to give customers a clear sense of where Komatsu is headed — showcasing new machines, next-generation technology, and integrated solutions that will drive productivity, simplify maintenance, and shape the future of their operations," stated Paul Moore, Vice President of Products, Marketing and Service for Komatsu North America.

Among the machines featured was the new HM460-6 articulated truck with an increased payload capacity of 46.3 tons and an overall machine weight that has been reduced by roughly 6,600 pounds compared to the HM400-5. Combined with a new nine-speed transmission, locking axles and traction control systems, the truck is designed to shorten haul cycles while lowering fuel consumption.

"We increased production, reduced the weight of the truck, and added a new engine and transmission. It all works together as a system to deliver faster cycle times and higher productivity," explained Bruce Boebel, Director of Products and Services for Komatsu's construction division, noting that the HM460-6 is powered by Komatsu's new DBA127 engine, a 12.7-liter powerplant designed to simplify emissions systems while extending service intervals, including a diesel particulate filter exchange interval of up to 8,000 hours.

Komatsu highlighted the first in its -12 series excavator platform, the PC220LC-12, which features a wider cab, customizable electro-hydraulic controls and advanced



In addition to machinery, Komatsu showcases its Smart Construction solutions at CONEXPO-CON/AGG 2026.



► VIDEO

Attendees check out a wide variety of the latest equipment, including Komatsu's new PC220LCi-12 excavator with intelligent machine control (IMC) 3.0 technology.

operator interfaces. The PC220LCi-12 intelligent machine control (IMC) model integrates new automation tools in IMC 3.0, such as swing-to-line and travel-along-line, enabling operators to maintain trench alignment and automatically reduce repetitive manual adjustments.

Komatsu also showcased its recently launched PC365LC-11 multifunction plus excavator with an electric swing system that captures and reuses energy generated during swing braking. The system stores recovered power and redistributes it during operation, improving cycle times and fuel efficiency during demanding tasks such as truck loading and trenching.

Additional currently available machines on display included WA485-11, WA475-11, WA380-8 and WA700-8 wheel loaders, each built to deliver dependable performance and efficiency across various applications. The WA485-11, WA475-11 and WA380-8 work well in construction and quarry applications, while the larger-capacity WA700-8 is built for surface mining.

Komatsu also gave attendees a preview of machines set to launch in the near future, including a PC158USLCi-12 excavator equipped

with the latest IMC 3.0 system. The 15-ton class excavator will be the first tight-tail model in its size category to offer factory-installed IMC, bringing advanced automation features to utility, highway and urban construction work where compact machines are common.

Komatsu offered show attendees an exclusive preview of two next-generation crawler dozers engineered to advance productivity and efficiency in earthmoving applications from site development and road construction to mining. The D61PXi-25 dozer with IMC 3.0 and the D175AX-10 large production dozer represent the next phase in Komatsu's evolution of powertrain performance, operator-centered design and integrated technology.

Alongside its machines, Komatsu emphasized digital jobsite solutions under its Smart Construction ecosystem. New tools demonstrated at the show included:

- **Smart Construction Dashboard Mobile** — a smartphone-based version of its jobsite visualization platform
- **Smart Construction Edge** — a base station for on-site drone data processing
- **Smart Construction Fleet Lite** — basic payload tracking



Watch the video

Smart Construction highlighted at CONEXPO-CON/AGG

... continued

- **Smart Construction Home** — a homepage for projects, displaying jobsites on a map with key metrics such as job completion percentage
- **Smart Construction Whiteboard** — a digital dispatch tool modeled after traditional office whiteboards that allows users to drag and drop machines and labor onto jobsite columns
- **3D Machine Guidance Flex** — a GPS-based guidance system designed for a wider range of machines including trucks, loaders and scrapers

“Smart Construction is about more than just building better machines — it’s about connecting those machines with people and processes to optimize the entire jobsite.”

*- Jason Anetsberger,
Director of Customer Solutions,
Komatsu*

“Smart Construction is about more than just building better machines — it’s about connecting those machines with people and processes to optimize the entire jobsite,” noted Jason Anetsberger, Director of Customer Solutions, Komatsu. “By combining intelligent equipment with digital planning and 3D control, we help customers eliminate waste, reduce idle time, and ultimately get the most efficiency and productivity out of every move they make.”

Additionally, Komatsu spotlighted its new Smart Quarry Autonomous solution, which uses artificial intelligence, onboard computing and sensor-based perception technologies to navigate mapped haul routes with minimal setup. System configurations are determined based on site requirements and applicable commercial agreements.

Plus, Komatsu featured fleet connectivity through its My Komatsu digital platform, which integrates telematics, parts purchasing, fleet data and predictive maintenance tools into a unified portal designed to help contractors manage equipment and jobsite performance more effectively.

Other highlights included machine and racing simulators that attendees could operate, a replica of the Atlassian Williams Racing Formula 1 car that Komatsu sponsors and partners with, and a company store with Komatsu-branded apparel and accessories.

“We want every visitor to leave our booth excited — not just about the equipment they see today, but about the innovation, digital transformation and long-term partnership Komatsu is building to support their success moving forward.”

*- Paul Moore,
Vice President of Products,
Marketing and Service,
Komatsu*

“We want every visitor to leave our booth excited — not just about the equipment they see today, but about the innovation, digital transformation and long-term partnership Komatsu is building to support their success moving forward,” commented Moore.

Honoring those who build

One of the CONEXPO-CON/AGG’s most visible moments came during the opening ceremony, when thousands of attendees donned bright orange safety vests for a Guinness World Record attempt for the largest gathering of people wearing high-visibility construction vests. Organizers aimed to surpass the previous record of 2,499 participants, using the moment to emphasize the construction industry’s commitment to safety and its collective impact on infrastructure, transportation networks, energy development, sports venues and civic landmarks across North America.



Attendees have a great time running simulators designed to give an operator’s view from the cab of a machine.



At CONEXPO-CON/AGG 2026, Komatsu introduces its new DBA 127 engine, which powers the new Komatsu HM460-6 articulated truck and will power additional soon-to-be launched machines.

"This record attempt is more than a number — it's a celebration of the advances, hard work, innovation and dedication of everyone in the construction industry," Wuesthoff said. "We want to honor those who build our cities, roads, railways, airports, stadiums and monuments, and highlight how their efforts touch every aspect of society. This record is particularly important to us as safety is and always will be of utmost priority for the industry and the people who make this work possible."

CONEXPO-CON/AGG also served as a forum for thought leadership through 150 educational sessions. On the show's Ground Breakers Stage, experts discussed emerging topics including artificial intelligence in construction, workforce development and infrastructure investment. Workshops focused on small business growth, equipment maintenance and mentorship opportunities for women in construction, reinforcing the industry's emphasis on workforce development.

The scale and influence of CONEXPO-CON/AGG reflect more than a century of industry evolution. The show traces its roots back to 1909, when the original Road Show in Columbus, Ohio, featured just 40 equipment

manufacturers across 40,000 square feet. Today, the event has grown into a global platform for innovation, connecting thousands of companies and professionals shaping the future of the built environment.

"This event continues to elevate the equipment manufacturing industry — amplifying innovation, insight and influence."

*- Dana Wuesthoff,
Show Director,
CONEXPO-CON/AGG*

"A century of progress is reflected in CONEXPO-CON/AGG's scale, scope and spirit," Wuesthoff stated. "This event continues to elevate the equipment manufacturing industry — amplifying innovation, insight and influence."

As the 2026 show concluded, organizers emphasized that the relationships formed, deals negotiated and technologies introduced during the week will ripple across construction projects worldwide for many years to come. The next edition of CONEXPO-CON/AGG is scheduled to return to Las Vegas March 13-17, 2029. ■

Industry rebalances around growth markets

Data centers, power infrastructure and adaptive reuse lead, while contractors invest in workforce and technology for long-term resilience

The U.S. construction industry enters 2026 in a period of recalibration rather than retreat. While contractors report more measured expectations than in the prior year, the overall outlook reflects an industry actively adjusting to economic uncertainty, policy shifts and evolving demand patterns. According to “Dampened Expectations: The 2026 Construction Hiring and Business Outlook” from the Associated General Contractors of America (AGC) and Sage, contractors are refining their strategies, focusing capital and talent on the sectors offering the strongest and most durable growth.

Rather than signaling contraction, the survey points to a maturing market in which firms are becoming more selective, disciplined and forward-looking. Concerns about inflation, interest rates and the broader economy remain top of mind. Still, many contractors see 2026 as a year to strengthen operational foundations while pursuing opportunities in high-growth segments.

Digital infrastructure and power drive momentum

The most powerful source of optimism remains data center construction. Contractors report the highest confidence in this segment, with demand fueled by artificial intelligence (AI), cloud computing, and the rapid expansion of digital services, according to the AGC and Sage report. Independent market data shows U.S. data center construction starts increased more than 15% year over year in 2025, with hundreds of billions of dollars in future projects planned or in preconstruction, according to ConstructConnect’s outlook, “The State of the Construction Economy: What to Expect in 2026” by Johnny Bradigan.

Closely linked to this growth is power and energy infrastructure. Rising electricity demand from hyperscale data centers, grid modernization and energy resilience initiatives is translating into strong construction activity. Long-term forecasts suggest data center power demand could grow dramatically over the next decade, reinforcing confidence in sustained investment across transmission, generation and energy-related facilities, according to a report from Deloitte, “2026 Engineering and Construction Outlook.”

Steady opportunities across institutional and industrial

Beyond digital infrastructure, several core construction markets remain on solid footing. Healthcare construction — including clinics, labs and hospitals — continues to benefit from demographic trends and modernization needs. Water and sewer infrastructure also maintains positive momentum, supported by public investment and aging systems that require upgrade, according to AGC and Sage.

Manufacturing construction shows cautious but meaningful growth potential. While higher capital costs and supply chain considerations have slowed some decisions, long-term reshoring initiatives and federal incentives continue to support industrial investment, according to ConstructConnect. Analysts note that many owners are taking a deliberate approach, balancing cost discipline with the need to expand domestic capacity.

Infrastructure and education adjust to funding realities

Public infrastructure markets remain active but more measured. Expectations for highway, bridge and transportation construction softened compared with recent peaks, reflecting funding timing and uncertainty tied to the upcoming expiration of the federal surface transportation authorization in late 2026. Even so, industry leaders emphasize that long-term infrastructure needs remain substantial, suggesting a pipeline that may strengthen as policy clarity improves, AGC reports.

AGC and Sage also noted that K-12 and higher education projects have slowed from earlier highs, but this shift reflects demographic changes and capital reprioritization rather than structural decline. Many institutions are focusing on renovation, modernization and adaptive reuse rather than large-scale new construction, aligning with broader industrywide reconstruction trends.





Data centers and energy appear to be strong markets for construction companies looking for opportunities to move dirt in 2026 and beyond, according to multiple industry professionals in their annual outlooks.

Private commercial markets find new paths

Traditional private commercial sectors — office, lodging and retail — remain uneven as we enter 2026. However, this softness has accelerated innovation. Office-to-residential conversions, mixed-use redevelopment and adaptive reuse projects are gaining traction, particularly in urban markets with excess office capacity. These projects are helping address housing shortages while creating new construction opportunities that rely more on creativity and technical expertise than raw volume.

Managing costs and policy headwinds

Tariffs and immigration policy remain important variables, but contractors are responding with greater sophistication. According to a report by AGC and Sage, roughly 70% of firms surveyed were affected by tariffs, prompting wider use of escalation clauses, shared-risk contract terms and strategic procurement practices. Industry research shows companies are increasingly diversifying their supplier base, sourcing domestically where possible, and using digital tools to improve cost forecasting and material planning, according to Deloitte.

AGC and Sage said labor availability remains a challenge, yet hiring intentions remain strong. More than three-fifths (63%) of contractors expect to add staff in 2026, according to the report by AGC and Sage. While recruiting remains difficult, firms are responding with higher wages, expanded training and broader workforce development initiatives.

Technology investment strengthens the industry's foundation

One of the clearest positive signals entering 2026 is the industry's accelerating investment in technology. More than 60% of contractors report using AI or plan to expand AI adoption, particularly in estimating, preconstruction and administrative functions, according to a report from AGC and Sage. Across the sector, firms are deploying digital tools such as building information modeling, AI-driven scheduling, and connected jobsites to boost productivity and manage complexity, said Deloitte.

These investments are helping firms offset labor shortages, protect margins and improve project delivery, positioning the industry for stronger performance as broader economic conditions stabilize.

A measured but confident outlook for 2026

The construction industry's 2026 outlook reflects resilience through adaptation. While growth is more concentrated than in recent years, the strength of data centers, power infrastructure, healthcare and reconstruction provides a solid foundation. Contractors are entering the year with realistic expectations, sharper cost discipline and a growing emphasis on technology and workforce strategy. Taken together, these trends suggest an industry that is not only weathering uncertainty but actively positioning itself for sustainable, long-term opportunity. ■

Editor's Note: This is a summary of forecasts from leading construction industry professionals who study past, current and future economic trends across multiple market segments to provide outlooks. It is for general informational purposes only and not designed to provide insight into your specific approach to your business. To view the reports in their entirety, please visit the websites for ConstructConnect (<https://www.constructconnect.com/blog/the-state-of-the-construction-economy-what-to-expect-in-2026>), Deloitte (<https://www.deloitte.com/us/en/insights/industry/engineering-and-construction/engineering-and-construction-industry-outlook.html>) and the Associated General Contractors of America/Sage (<https://www.agc.org/news/2026/01/08/contractors-have-dampened-expectations-2026-apart-data-centers-and-power-projects-amid-worries-about>).

Wide spectrum of tasks with versatile mill

WIRTGEN's W 210 XF delivers from surface layer rehabilitation to full-depth removal with power, precision and milling efficiency

WIRTGEN's W 210 XF is engineered for maximum productivity across a wide spectrum of tasks — from surface layer rehabilitation to fine milling and full-depth pavement removal.

Built for major infrastructure projects such as freeways, state highways and airport runways, the W 210 XF combines high daily output with advanced machine intelligence such as WIRTGEN's MILL ASSIST machine control system. It automatically balances performance, fuel efficiency and operating costs. Operators can choose among three strategic modes — cost, performance or quality — while the system continuously optimizes milling parameters for the best results.

Power comes from a 778-horsepower engine with a torque profile that was refined specifically for cold milling demands. Paired with the DUAL SHIFT two-speed powershift transmission, the W 210 XF offers a large range of milling drum speeds. Lower drum speeds reduce fuel consumption, pick wear and noise, while higher speeds maximize output and deliver a superior milling pattern even at depths reaching up to 13 inches. This range ensures the machine can handle the most challenging milling tasks with efficiency and long-term sustainability.

More accurate documentation

Flexibility is another hallmark. Thanks to its single-bolt design that utilizes on-board tools, the W 210 XF's Multiple Cutting System (MCS) enables the milling drum to be exchanged within minutes, allowing crews to quickly switch between drums with different tooth spacings. With the quick-change system, the entire drum housing can be swapped in under an hour to achieve milling widths of 6 feet, 7 inches; 7 feet, 3 inches; and 8 feet, 2 inches.

For documentation and jobsite transparency, WIRTGEN's WPT Milling (Wirtgen Group Performance Tracker Milling) records machine and site parameters automatically. Upon completion, data is transmitted to the owner for streamlined billing and analysis. All information appears in real time.

Precision is strengthened by the LEVEL PRO ACTIVE leveling system, which is fully integrated into the machine's controls. The system provides clear sensor feedback, simplifies operator workload and includes automated functions such as lifting over manhole covers, ensuring accurate milling results with minimal manual adjustments. ■

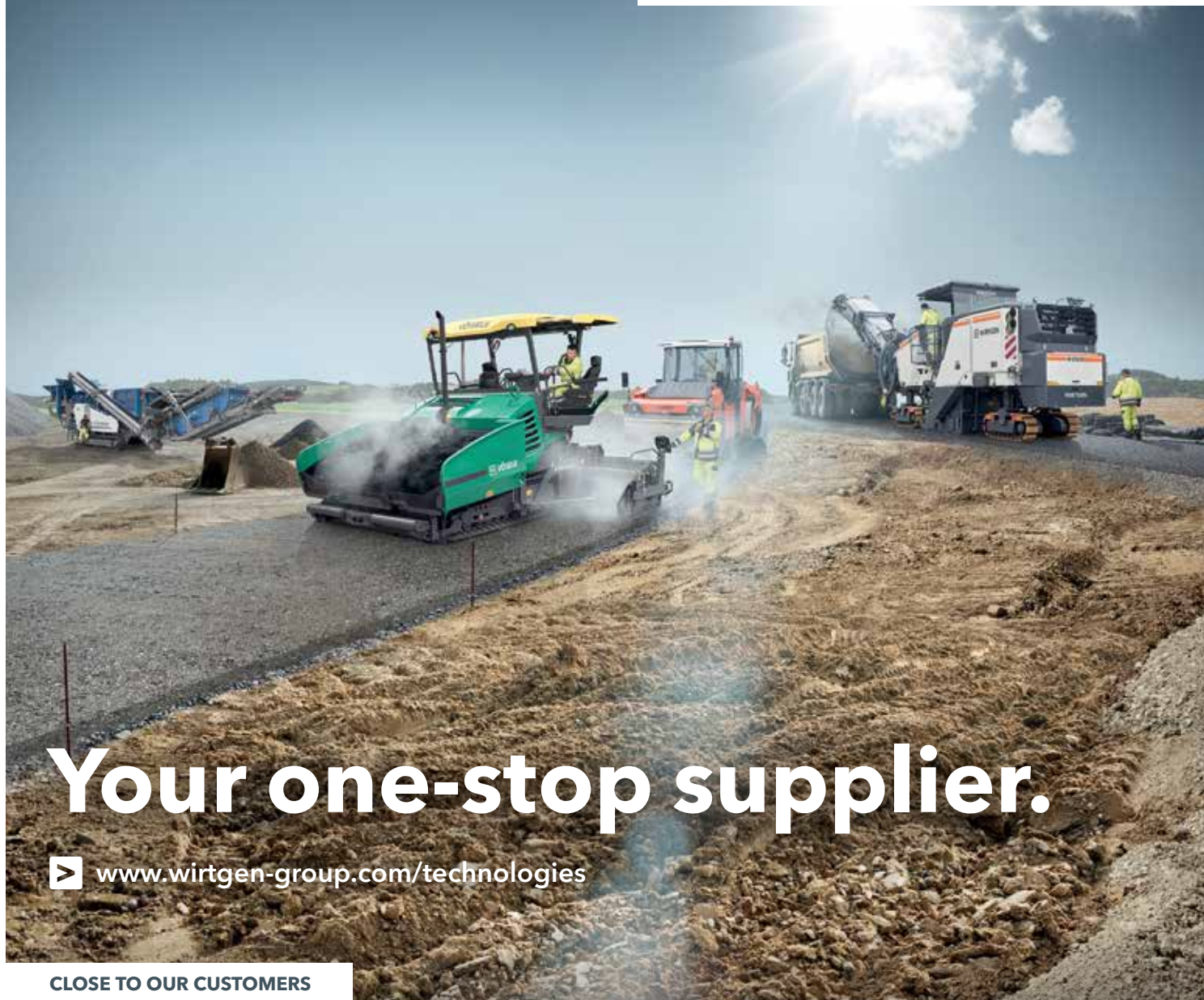
Quick specs			
Model	Horsepower	Operating weight	Milling widths
W 210 XF	778 HP	65,698 lbs.	6 feet, 7 inches to 8 feet, 2 inches



The WIRTGEN W 210 XF large milling machine tackles a full-depth pavement removal job, demonstrating its high-output performance and adaptable milling capabilities.

A JOHN DEERE COMPANY

 **WIRTGEN GROUP**



Your one-stop supplier.

 www.wirtgen-group.com/technologies

CLOSE TO OUR CUSTOMERS

ROAD AND MINERAL TECHNOLOGIES. With leading technologies from the WIRTGEN GROUP, you can handle all jobs in the road construction cycle optimally and economically. Put your trust in the WIRTGEN GROUP team with the strong product brands WIRTGEN, VÖGELE, HAMM, KLEEMANN.

 www.wirtgen-group.com

WIRTGEN



VÖGELE



HAMM



KLEEMANN

EXPERIENCE
you can trust

QUALITY
that's proven

Hundreds
of models

Thousands
of options



ISO 9001 Quality Management System
WBENC Certified • EEO

WOMEN
OWNED



Family Owned & Operated Since 1974 • Made in the USA

FELLING The Trailer **EXPERTS**



Lansing (517) 321-8000 • Saginaw (989) 777-0090 • Traverse City (231) 267-5060
West Detroit (248) 437-8121 • NE Detroit (586) 727-7502 • Grand Rapids (616) 538-2400

Double duty with a single roller

HAMM's HC 250i C VC compactor with vibration crusher drum is designed to crush and compact stone in the same pass

HAMM's HC 250i C VC is engineered to tackle mixed soils, basalt, granite and other construction materials with comparable pressure resistance in a single pass. HAMM said the "VC" initials — short for Vibration Crusher — signal the roller's ability to both crush and compact simultaneously.

Weighing in at nearly 55,000 pounds, the HC 250i C VC comes standard with heavy-duty tires suited for rocky terrain, a fully equipped operator's cab and HAMM's Easy Drive operating concept intended to streamline controls for varied job conditions. The compactor's standard seat features an extended backrest to support drivers during long hours and demanding terrain. An air-sprung seat is also available as an optional upgrade.

Beyond traditional applications, HAMM positioned the compactor for landfill leveling, tunnel and road planning, and surface mining operations. Its ability to pre-crush and loosen

stone reduces the workload of downstream processes such as layer-by-layer milling.

HAMM also redesigned the tool holder system, tailoring it for swift, straightforward tool changes. Compatible with both round-shank cutting tools for general stone work and heavy-duty carbide-tipped tools for abrasive or hard stone, the system allows inserts to be removed and attached without specialized tools. This approach is intended to lower maintenance time and service costs.

Additional features and benefits include:

- High crushing force due to high point load
- A powerful engine and reinforced components around the front frame, three-point articulation and the underbody, so it is well-equipped for tough applications
- A reinforced drum drive, enabling the machine to take on grades as steep as 60% ■

Quick specs

Model	Operating weight with cab	Horsepower	Drum width
HC 250i C VC	54,982 lbs.	217.7 HP	84.3 in.



The new HAMM HC 250i C VC compactor with a vibration crusher drum features a powerful drive, no-spin axle and three-point articulation for outstanding traction and off-road mobility.



AUTHORISED DEALER

Construction Layout Machine Control Solutions

Michigan's leader in positioning solutions and machine control technology, we offer contractors with Topcon technologies to increase productivity and accuracy on the jobsite.

Contact us today to learn more about solutions you can count on from Topcon.



CALL US TODAY
616-207-0712



SALES - SERVICE - RENTAL - SUPPORT



Lansing

3600 N. Grand River Ave
Lansing, MI 48906

Saginaw

4600 AIS Drive
Bridgeport, MI 48722

Traverse City

8300 M-72 East
Williamsburg, MI 49690

West Detroit

56555 Pontiac Trail
New Hudson, MI 48165

NE Detroit

65809 Gratiot Ave
Lenox, MI 48050

Grand Rapids

600 AIS Dr. S.W.
Grand Rapids, MI 49548

Engineered for multifunction applications

Komatsu PC365LC-11's electric swing system delivers more power, faster cycle times and lower fuel consumption to help boost jobsite productivity

Komatsu is bringing a new level of performance and efficiency to large excavators with the introduction of the PC365LC-11 multifunction plus model to the North American market. Built to deliver more power exactly where it's needed, this machine leverages its innovative electric swing system with "boom-up" power assist to deliver up to a 15% increase in productivity and up to a 20% reduction in fuel consumption compared to conventional Komatsu excavators in the same size class. The fully electric swing system, advanced hydraulics and refined operator environment help contractors complete jobs faster while significantly reducing fuel consumption and operating costs.

Designed specifically for demanding multifunction applications, the PC365LC-11 features a refreshed exterior design, an enhanced cab and a suite of standard and optional features optimized for North American construction jobsites.

"The PC365LC-11 was engineered for excellence in multifunction applications by leveraging its innovative electric powertrain system to boost jobsite productivity while reducing fuel consumption compared to conventional Komatsu excavator offerings in this size class."

*- Matthew Moen,
Product Manager,
Komatsu*

"The PC365LC-11 was engineered for excellence in multifunction applications by leveraging its innovative electric powertrain system to boost jobsite productivity while reducing fuel consumption compared to conventional Komatsu excavator offerings in this size class," said Matthew Moen, Product Manager, Komatsu. "To highlight these performance enhancements, we're emphasizing the concept of 'multifunction plus' as the defining feature of this machine."

Enhanced performance and reduced fuel consumption

The PC365LC-11 is the only excavator in its class equipped with a fully electric swing system with "boom-up" power assist. The PC365LC-11's electric swing motor enhances multifunction performance by delivering faster swing acceleration, reducing cycle times and increasing productivity. Unlike conventional hydraulic swing motors, the PC365LC-11's electric swing motor

recovers kinetic energy at the end of each swing and converts it to electricity.

That energy is stored in the Komatsu-designed ultra-capacitor, where it can power the electric swing motor or be directed to the engine-mounted motor-generator. This provides an instantaneous boost of up to 70 additional horsepower to the work equipment by assisting the engine's response from an ultra-low idle speed of 700 RPM. The ultra-low idle state was designed to reduce fuel consumption further — lowering total cost of ownership and minimizing downtime. All electrical energy used by the system is generated during normal machine operation, and there is no need for external charging.

By eliminating the need for hydraulic power for swing operations, full hydraulic flow is now optimally routed to the boom, arm and bucket cylinders — improving digging cycle times, reducing work equipment lag and creating a smoother operation in multifunction applications.

The electric powertrain also contributes to a quieter jobsite. Eliminating hydraulic flow during the swinging motion reduces mechanical noise and vibration, and the ultra-low 700 RPM idle

Continued ...

Quick specs

Model	Horsepower	Operating weight	Bucket capacity
PC365LC-11	269 HP + 70 electric HP	81,791-85,495 lbs.	0.89-2.56 yd ³



Designed for demanding multifunction applications, the Komatsu PC365LC-11 helps contractors to work faster, quieter and more efficiently, all while lowering total cost of ownership.

New features and enhancements

... continued

speed operates significantly quieter than the conventional 1,000 RPM low idle. The external noise reduction of 4 dB(A) helps improve the working environment for the operator, nearby crews and others near the jobsite.

Even in the most demanding multifunction applications, these advancements make the PC365LC-11 up to 15% more productive and reduce fuel consumption by up to 20% when compared to the conventional PC360LC/LCi-11 — a rare combination of higher output and greater efficiency.

Compared to the previous model, the PC365LC-11 brings new features and enhancements across three key areas: operator experience, technology and attachment flexibility:

- **Greater operator comfort for long shifts:** A new standard** premium heated air-suspension operator seat features a high leather back, improved cushioning and multiple adjustments to enhance operator comfort during long working shifts. New standard proportional joysticks provide smooth, variable-speed control of plus one attachments while offering an ergonomic feel, helping reduce operator fatigue and wrist stress.
- **Technology that gets the job done:** The KomVision camera system comes as standard** and provides a real-time bird's-eye view of the machine and its surroundings to help improve situational awareness that supports Komatsu's mission of zero harm. An optional Smart

Construction 3D Machine Guidance kit can be factory-installed, giving operators and managers access to 3D design and topographic data to improve accuracy, manage load volumes and optimize operations.

- **Efficient, fast and versatile attachment operation:** The tool control system is standard for machine configurations with a plus one hydraulic attachment piping. This empowers operators to configure and store flow rates and target pressures for multiple attachments. Attachment information is displayed on the in-cab monitor interface, enabling quick switching between tools with accurate, preconfigured hydraulic settings. Optional hydraulic quick coupler piping can be factory-installed, saving both time and local installation costs. This piping provides the necessary hydraulic flow and pressure to operate hydraulic quick couplers, such as the Lehnhoff fully automatic symmetric quick coupler.

For added peace of mind, the machine's electric powertrain components are covered by a 7-year/15,000-hour transferable warranty. ■

**Statistical claims and comparisons referenced herein are made against conventional Komatsu excavators in the same size class, against the Komatsu PC360LC-11 and PC360LCi-11. New features and enhancements referenced herein from the previous model are compared with those of the Komatsu HB365LC-3.*

***To be introduced as a running change after model release. Please work with your Komatsu representative if this feature is required.*



The Komatsu PC365LC-11 multifunction plus excavator delivers more power where it counts with a fully electric swing system, advanced hydraulics and a refined operator environment.



AISEQUIP.COM
GRAND RAPIDS 616.538.2400
LANSING 517.321.8000
DETROIT-WEST 248.437.8121
TRAVERSE CITY 231.267.5060
SAGINAW 989.777.0090
DETROIT-N.E 586.727.7502

COMPACT EQUIPMENT THAT GETS BIG JOBS DONE



Machines feature the iconic single-arm JCB Powerboom™ and side-door entry.



JCB Compact Track Loaders

JCB compact track loaders are stronger and safer than conventional twin-arm machines and deliver the power and performance you need.



JCB Skid Steer Loaders

JCB skid steer loaders deliver power and safety with their single-arm design, giving you the ability to work longer, harder and safer.



JCB Teleskids

JCB Teleskids are the world's first and only skid steer and compact track loaders with a telescoping boom, allowing it to lift higher, reach farther and dig deeper than any other skid steer.

Demo Days

Komatsu showcases more than 40 pieces of equipment and technology solutions at its Cartersville Customer Center

Gaining actionable insights into how equipment and technology provide value can benefit your operation. The ability to experience a machine from the operator's seat adds value. Komatsu gave attendees the opportunity to do both during its most recent Demo Days at its Cartersville Customer Center in Georgia.

More than 40 products were available across the 38-acre demo site for customers to see up close and operate. The equipment

ranged from compact excavators to large construction, forestry, demolition and mining machines, as well as forklifts and a reclaim feeder. Representatives from Komatsu and its affiliates, including Montabert, Hensley Industries and Lehnhoff, provided insights on how to effectively integrate the equipment and attachments into attendees' operations.

Komatsu Smart Construction and Smart Quarry representatives had displays set up to provide information on solutions available for jobsite management, such as Smart Construction Remote, Office, Field and Drone, as well as Smart Quarry Site and Smart Quarry Study. My Komatsu representatives provided information about Komatsu's online hub for optimal fleet management.

"What we have really focused on with Demo Days is the overall breadth of product offerings and solutions we have that are designed to increase efficiencies in any size of operation and at any stage of a project."

*– Andrew Earing,
Director of Operator and Technical Training,
Komatsu*

"What we have really focused on with Demo Days is the overall breadth of product offerings and solutions we have that are designed to increase efficiencies in any size of operation and at any stage of a project," said Andrew Earing, Director of Operator and Technical Training, Komatsu. "Customers have always appreciated the opportunity to get behind the joysticks or steering wheel and operate the machinery. More and more, we are seeing that they are now coming



Verdeterre Contracting's Justin Bartley (left) and Craig Krajniak (right) meet with AIS/CEC's Collin McLaughlin at Demo Days.



(L-R) AIS/CEC's Jeff Mehrhof, Pete's Contracting's Pete Vandenbos, PJ Steel's Tony Barber and AIS/CEC's Denny Gill explore Demo Days.



(L-R) At Demo Days, Leadhead Construction's Ira Newble and Crystal Newble check out the Komatsu excavators on display with AIS/CEC's Clifton Ricks.



► VIDEO

Komatsu showcases its newest excavators at Demo Days, including the PC220LCi-12 with intelligent machine control (IMC) 3.0.

to learn about our technology and how to incorporate it."

New machines stand out

Among the standout machines available to operate were Komatsu's new standard PC220LC-12 excavator and its PC220LCi-12 intelligent machine control (IMC) 3.0 model, which features automation such as auto grade assist, auto stop control, bucket angle hold, compaction control, auto swing, and payload monitoring. The PC220LCi-12 also has 3D boundary control, which helps operators work efficiently across the entire jobsite by remembering multiple restriction zones specific to each work area. It is the first OEM factory-integrated feature of its kind in the construction industry. Auto swing with travel stop functionality is also an industry first for excavators.

The 21- to 24-ton-class PC220LC excavators have been engineered to empower operators and improve jobsite productivity. They feature a 28% larger cab with 30% more legroom versus the previous model, as well as improved visibility, reduced noise and vibration, and a high-quality, heated air-suspension seat.

The new 8-inch HD monitor puts machine data, controls and customization options at the operator's fingertips.

A new electronically controlled hydraulic system and high-output engine help deliver up to an 8% increase in digging force, up to 7% more lift capacity and up to a 20% reduction in fuel costs compared to the previous Komatsu PC210LC-11 model. The new P plus mode is designed to boost workload productivity by up to 18%.

"The PC220LC was built from the operator out and is the most advanced excavator Komatsu has ever built," stated Matt Moen, Product Manager, Komatsu. "Our goal was to have the machine and operator working together. The larger cab with more glass and better visibility, along with an upgraded seat, increases comfort. It has electric-over-hydraulic controls, a new touch-panel monitor that enables extensive individual customization for each operator and much more. In the near future, we will add additional automation features such as swing-to-line and travel-along-line."

In addition to the PC220LC excavators, attendees could operate the recently



Watch the video

Continued...

Hybrid excavator and new wheel loaders on display

... continued

relaunched PC365LC-11 (formerly HB365LC-3) hybrid excavator that includes multifunction plus. It combines a new look with the same proven technology that captures energy during swing and stores it in the ultracapacitor. When swinging, all available hydraulic power is sent to the boom, arm and bucket to improve cycle time, reduce fuel consumption and increase production. Komatsu equipped the PC365LC-11 with its Smart Construction 3D Machine Guidance solution, which brings 3D to most conventional excavators. This gives operators in the field and managers in the office access to design and topographic data, helping drive accuracy, control load volumes and promote optimization.

“This is always such a great event for customers, their dealers and for us, and we really enjoy being able to provide educational and operational opportunities.”

*– Andrew Earing,
Director of Operator and Technical Training,
Komatsu*

Komatsu also spotlighted its new WA475-11 and WA485-11 wheel loaders, which deliver lower fuel consumption, higher engine power and greater climbing speed compared to previous models. Both have a Komatsu Hydraulic Mechanical Transmission (KHMT) engineered for improved fuel efficiency and

productivity, as well as large, comfortable cabs that help reduce fatigue.

Smart Construction and other demonstrations

Komatsu demonstrated its Smart Construction Drone solution, which provides accurate jobsite topography safely, quickly and easily.

“The ability to fly and map a jobsite and send that data back to the office or field personnel digitally expedites the time it takes to evaluate the condition or the state of the project,” noted Earing. “Being able to track that in near-real time helps you make faster production and efficiency decisions regarding scheduling, resources and more. The data can easily be moved into other solutions, such as Dashboard.”

Demonstrations were also available for Komatsu’s FH120 forklift, RF-5 reclaim feeder and PC490HRD-11 high-reach demolition excavator equipped with the K100 boom change system that allows for hands-free boom changes from the cab of the machine.

“This is always such a great event for customers, their dealers and for us, and we really enjoy being able to provide educational and operational opportunities,” concluded Earing. “This Demo Days was a little rainy and chilly, but that didn’t seem to deter anyone from putting the machines to the test, which we like to see.” ■





COMPACT EQUIPMENT FOR BIG JOBS ON YOUR FARM

Featuring the iconic single-arm JCB Powerboom™ and side-door entry.



JCB Compact Track Loaders

JCB compact track loaders are stronger and safer than conventional twin-arm machines and deliver the power and performance you need.



JCB Skid Steer Loaders

JCB skid steer loaders deliver power and safety with their single-arm design, giving you the ability to work longer, harder and safer.



JCB Teleskids

JCB Teleskids are the world's first and only skid steer and compact track loaders with a telescoping boom, allowing it to lift higher, reach farther and dig deeper than any other skid steer.

Visit jcb.com for a quote on a compact JCB machine.



AISEQUIP.COM
GRAND RAPIDS 616.538.2400
LANSING 517.321.8000
DETROIT - WEST 248.437.8121
TRAVERSE CITY 231.267.5060
SAGINAW 989.777.0090
DETROIT - N.E. 586.727.7502

Up to
15% increase in
productivity*

7-year/15,000 hour

transferable warranty on
hybrid components

Up to
20% reduced fuel
consumption*

PC365LC-11

Choose power and performance

The PC365LC-11 is engineered for excellence in multifunction applications. The innovative electric swing system with boom UP power assist helps optimize productivity and fuel consumption.

Discover more ► [komatsu.com](https://www.komatsu.com)

KOMATSU

*compared to Komatsu's PC360LC/LCi-11 model(s)

© 2025 Komatsu Ltd. or one of its subsidiaries. All rights reserved.

Cutting-edge technology for quarry operations

Komatsu and Pronto team up to bring scalable autonomous haulage to quarry operations of various sizes across North America

Komatsu and off-road autonomy pioneer Pronto are collaborating to deploy Pronto's autonomous haulage technologies to quarry operations in North America. The partnership centers on the launch of Komatsu Smart Quarry Autonomous, which integrates Pronto's autonomy technologies into quarry-sized haul trucks and ties into Komatsu's Smart Quarry solutions. This alliance further positions both companies as leaders in transforming the quarry industry through cutting-edge autonomous technologies.

"This collaboration with Pronto accelerates our vision of smart, automated quarry operations."

*– Jason Anetsberger,
Senior Director for Customer Solutions,
Komatsu*

The new OEM-agnostic solution will allow quarry operations to retrofit existing Komatsu vehicles or purchase new trucks equipped with Pronto's self-driving system, enabling 24/7 operation with minimal human intervention. The result is a step-change in operations: promoting safety by removing drivers from the immediate quarry environment, facilitating consistent cycle times with better fuel

efficiency and providing data-driven insights via the Smart Quarry platform designed to optimize the overall operation of quarries.

"This collaboration with Pronto accelerates our vision of smart, automated quarry operations," said Jason Anetsberger, Komatsu's Senior Director for Customer Solutions. "We have decades of experience with autonomous haulage in large-scale mining. Now, we're bringing that expertise to quarries of all sizes."

Unprecedented insight

Pronto's autonomous technologies utilize advanced artificial intelligence and an array of rugged sensors to perceive the environment and navigate haul roads. This streamlined approach is designed to significantly lower the cost and complexity of deploying autonomy for quarries of various sizes. Combined with Komatsu's Smart Quarry Site fleet management and analytics suite, operators will be equipped with an unprecedented level of insight and real-time control over their operations.

"Partnering with an industry leader like Komatsu is about more than technology; it's about accelerating the future of heavy industry," said Anthony Levandowski, CEO of Pronto. ■



Higher overall mark

ASCE's 2025 Report Card shows improvement in U.S. infrastructure, raising its grade to a C as investment helps in upgrading some sectors

Some progress has been made in upgrading the United States' infrastructure, according to the American Society of Civil Engineers (ASCE), which recently released its 2025 Report Card for America's Infrastructure. The ASCE noted that there is still a long way to go, as it gave the overall infrastructure a grade of C. That represents an improvement over the 2021 report, which graded U.S. infrastructure as a C-.

ASCE graded 18 sectors, with broadband making the list for the first time and receiving a C+. Ports and rail received the highest marks, with a grade of B and a grade of B-, respectively. Overall, eight of the sectors received higher grades compared to 2021.

"Unfortunately, while significant advancements are being made, we still face a substantial investment gap," ASCE noted in its 2025 report, while acknowledging that infrastructure investment has been helped by 2021's Infrastructure Investment and Jobs Act (IIJA). "The shortfall grows as existing infrastructure systems continue to age and demands on those systems increase."

ASCE also noted that passage of the IIJA has shed light on key issues and documented just a few of the challenges affecting our industry:

- Projects should be modernized or replaced by prioritizing resilience to withstand extreme weather
- Resilience-focused measures may add to upfront costs but save on sudden, less

predictable and large financial impacts from disaster-related damages

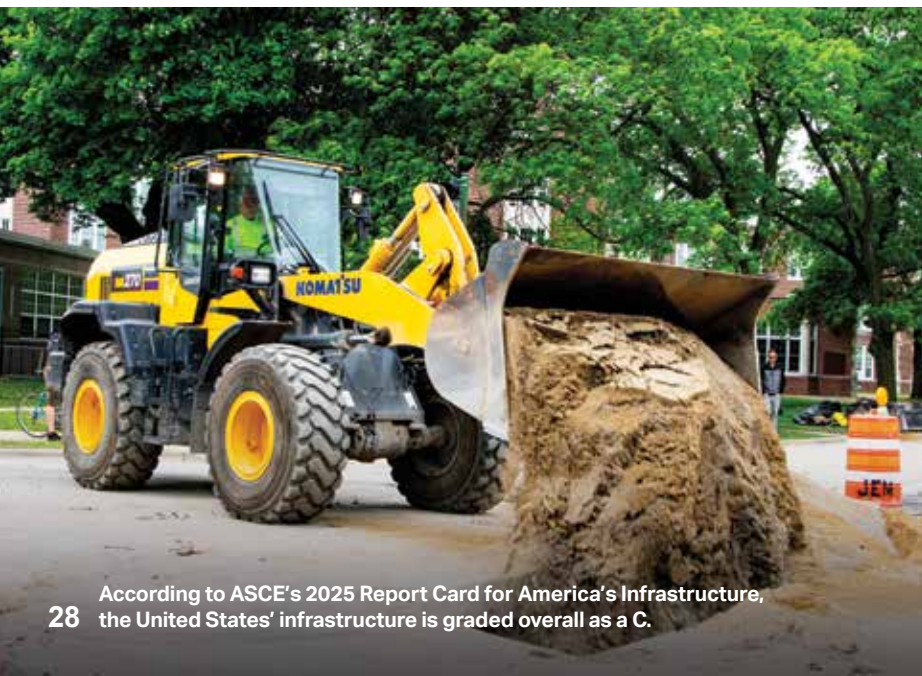
- Infrastructure projects take a long time to develop, and stakeholders may hesitate to pursue resilient designs without assurances that current funding levels will be sustained in the future

Average and below

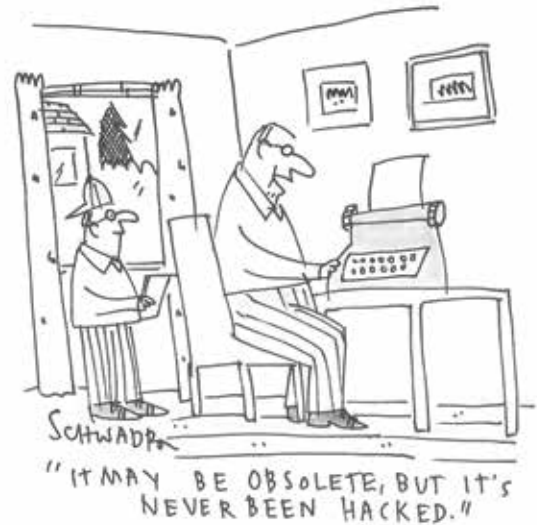
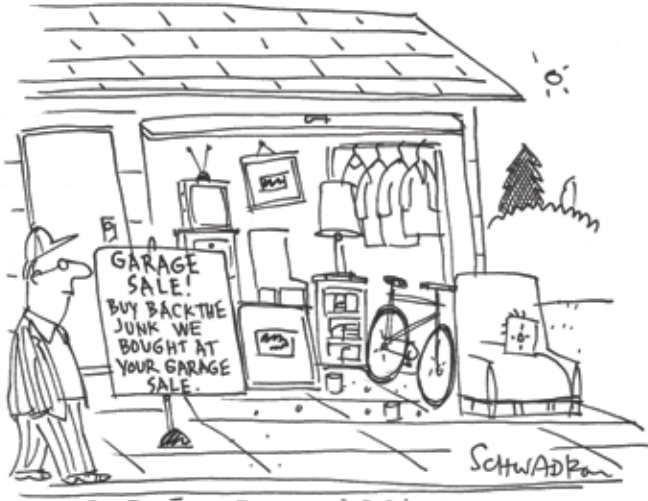
Bridges, drinking water, hazardous waste, inland waterways, public parks and solid waste were all in the C+ to C- range. Aviation, dams, energy, levees, roads, schools, stormwater, transit and wastewater all received either a D+ or D. This year's report card was the first since the original in 1998 that had no category below a D.

"The 2025 Report Card for America's Infrastructure provides a snapshot of how our infrastructure systems are faring and offers solutions for improving the performance of each category," ASCE stated in its report. "For the second consecutive report, Report Card grades show that U.S. infrastructure is trending in the right direction thanks to comprehensive support, innovative solutions and bold leadership. Continued action will further improve these networks, unlocking the full potential of our nation's economy and creating opportunities for all Americans."

You can view the full report at <https://infrastructurereportcard.org/>. ■



On the light side



Did you know?

There are about 2,000 firefly species, and each one has its own unique flashing pattern.

Dr. Pepper was created in 1885 by pharmacist Charles Alderton in Waco, Texas.

Hearst Castle in San Simeon, California, was designed by female architect Julia Morgan.

The building One Times Square was built in 1904 as the headquarters for the New York Times.

M&M'S Plain Chocolate Candies were introduced in 1941.

Mark Twain was the first author to use a typewriter to write a manuscript.

Ostriches are the largest bird.

The United States will celebrate the 250th anniversary of the Declaration of Independence on July 4, 2026.

Claude Monet painted nearly 300 paintings of water lilies from the late 1890s until his death in 1926.

Brain Teasers

Unscramble the letters to reveal some common construction-related words. Answers can be found in the online edition of the magazine at www.CECONTrack.com

1. ILOS _____
2. RAEA _____
3. LUDIB _____
4. FLTI _____
5. VPC _____



See the answers

Cost-effective way to maintain productivity

Aggregate producer Harshman Construction uses genuine Komatsu Reman components to increase the life of its high-hour wheel loaders

Multigenerational family business Harshman Construction LLC continues to serve customers with a wide range of aggregate products nearly 50 years after Frank Harshman and his sons Frank, Jeff and Warren started the operation. Today, the third generation of the Harshman family oversees 17 locations that produce hundreds of thousands of tons of materials each year.

"We have six crushing plants and a dirt crew that does all our own stripping," elaborated Service Manager Burton Harshman, who leads the business with his brothers Sam and Casey as well as their cousins Katie, Trenton and Brendan. "We are strictly a material supplier, with products ranging from ag lime to riprap. Base rock, concrete stone and asphalt stone are our main products."

With a fleet of more than 175 pieces of equipment that includes many Komatsu excavators and wheel loaders, Burton is responsible for fleet management that ensures the machinery continues to perform at a high level in order to maintain production.

"We pride ourselves on taking care of equipment, and because of that we have a large number of high-hour Komatsu machines that remain productive," stated Burton. "We regularly service our equipment and change components as needed. A few years ago, we made the decision along with our Komatsu distributor to rebuild a couple of WA600 loaders with Komatsu Reman components as opposed to buying new. It proved to

be a very cost-effective way to maintain their productivity and extended the life of those machines."

In addition to being more cost-effective, the quality of genuine Komatsu remanufactured parts and components is better than will-fit items. Plus, the Reman parts and components are backed with a one-year, unlimited-hour warranty and a quality assurance program of up to 10,000 hours on major components. With fewer raw materials used in remanufacturing, they also contribute to improved sustainability.

Easy decision

After seeing the high production the rebuilt WA600 wheel loaders delivered, the Harshman Construction team confidently decided to rebuild a Komatsu WA500 wheel loader on its own with Komatsu Reman components. Harshman Construction's maintenance staff replaced the engine, transmission and pumps.

"The frame of the machine was really good, and the pins and bushings were still in excellent condition, even at 18,000 hours," said Burton. "That, along with the cost savings of using Reman components and the warranty and assurance, made the decision to rebuild an easy one. Basically, we're getting a like-new machine that we can run for several thousand hours. The savings allow us to invest more resources into growing our business." ■

**The opinions expressed here are from the end user as quoted. The results described herein are those of these end users under certain conditions. Individual results may vary.*



Watch the video



Harshman Construction's rebuilt Komatsu WA600 wheel loader utilizes Komatsu Reman components.

USED EQUIPMENT

517-327-2072



D37PXI-23 \$115,900
Stk: W43863



PC138USLC-11 \$127,900
Stk: W43861



D39PXI-24 \$84,900
Stk: H64933



PC360LC-10 \$104,900
Stk: H63456



WA300-1 \$32,500
Stk: C40503



PC78US-10 \$74,900
Stk: W43907



D39PX-23 \$89,900
Stk: C30551



PC78US-10 \$74,900
Stk: W43905



PC30MR-5 \$34,900
Stk: W43824



PC88MR-10 \$59,900
Stk: H67930



D37PXI-23 \$79,900
Stk: U219912



WA180-3 \$19,900
Stk: H66678

Visit ceceq.com for more

WE'VE GOT YOU COVERED!

All Makes, All Models, All the Time.

The best source for all of your **Equipment, Rental,**
and **Maintenance Needs**



Visit CECEQ.COM to view our inventory